

# Swift & Sure

Swift & Sure is one of SFC's most popular Gas Springs and is available in an extensive range of sizes and with a wide range of End Connectors and Brackets for a wide variety of applications.

SFC prides itself on its service to customers, with design engineers on hand to work with you using the latest CAD/CAM techniques. Recognising that no two applications are the same, SFC provides engineered solutions to meet your exact requirement.

## Benefits

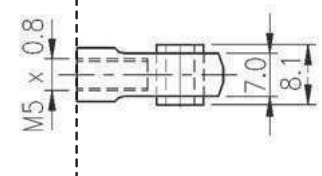
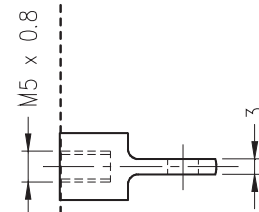
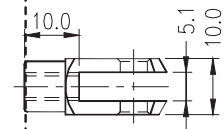
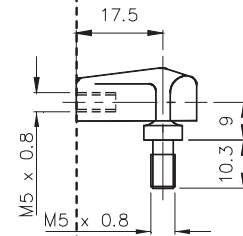
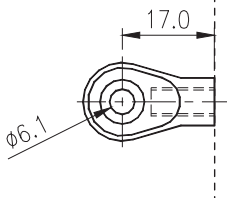
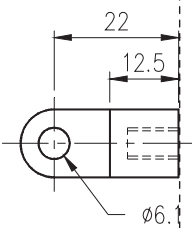
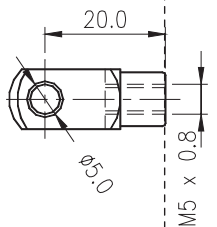
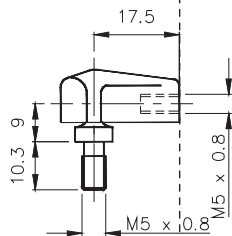
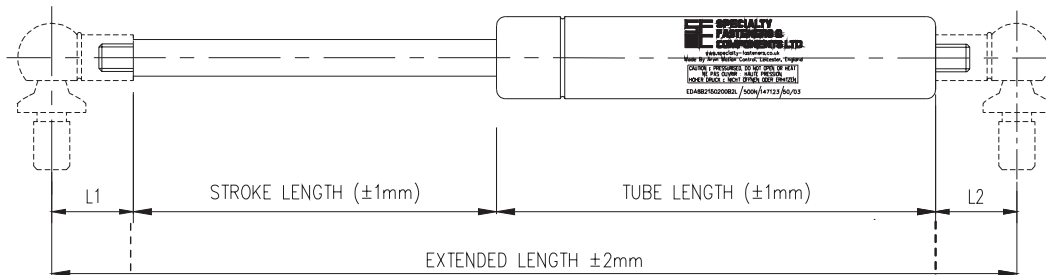
- **Self Contained unit and maintenance free**
- **Safe to use with easy finger-tip control**
- **Custom Design, sized to your application**
- **Custom force setting or adjust-yourself option**
- **Over 2,500 different combinations**
- **Available in Stainless Steel**
- **Manufactured to ISO 9001:2000**

Together, we can select the most appropriate Gas Spring for your application, and provide fixed force or Vari-Lift prototypes quickly for testing on your application.

**Swift & Sure Gas Springs are ideally suited for use on car tailgates / bonnets, machine guards, lockers, access panels, hood supports, hatch covers and many more.**


Swift & Sure is an entirely self-contained, maintenance free, hydro pneumatic ram which is charged under pressure with an inert gas. It has the characteristics of a compression spring which, coupled with a small change in force as it extends, provides a controlled rate of movement. At the end of the extension stroke, oil damping occurs due to a hydraulically cushioned zone. These features help protect hinges and mounts by applying constant force with a damped end of travel.

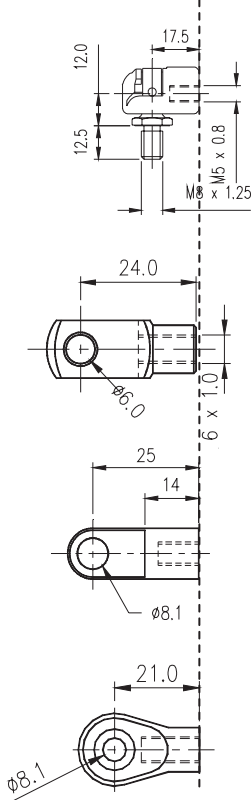
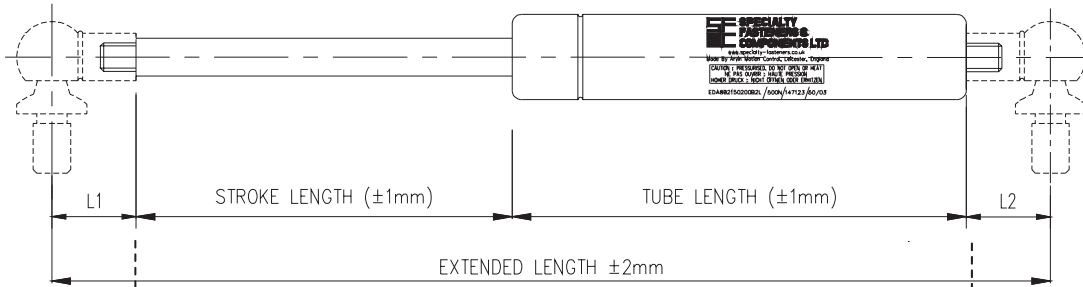
<b>Fixed Force - Standard Lift 6-15 Gas Spring</b>	
Approximate Lid Weight	<b>Up to 10Kg</b>
Piston Rod	<b>ø 6 mm Nitrided Steel</b>
Cylinder	<b>ø 15 mm Steel Black Powder Coated</b>
End Connectors	<b>Nylon, &amp; Steel options</b>



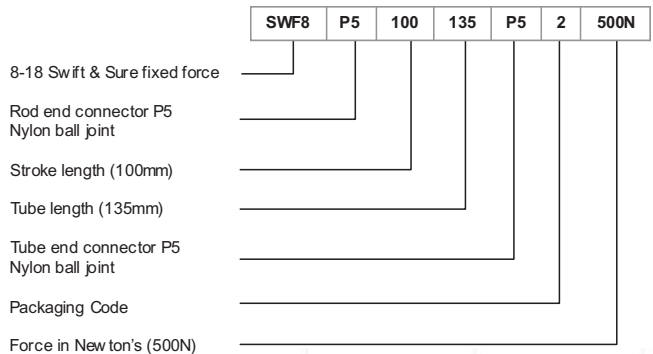
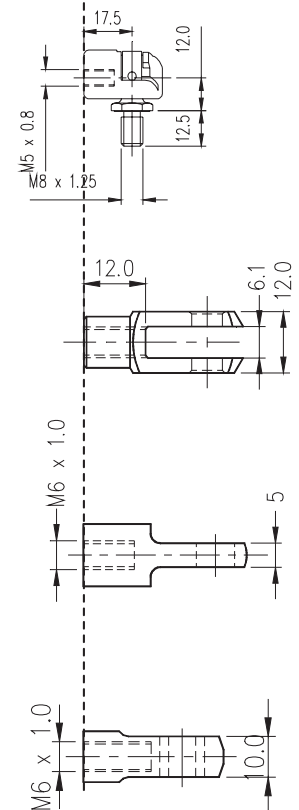
<b>An Extensive Range of Sizes and Forces</b>
Standard Stroke: (In 5mm Increments) <b>60mm to 200mm</b>
Shortest Tube available for chosen stroke length: <b>Tube Length = Stroke + 30mm</b>
Standard Tube: (In 1mm increments) <b>90mm to 230mm</b>
Extended Length: <b>Stroke + Tube + L1 + L2.</b>
Force Range: (in 10 N Increments) <b>50N to 400N (11 to 90lbs)</b>
Standard thread: <b>M5 x 0.8</b>
Also available in Variable Force, Stop & Stay, and Stainless Steel Versions

	SWF6	P1	100	135	P1	2	200N
6-15 Swift & Sure fixed force							
Rod end connector P1 Nylon ball joint							
Stroke length (100mm)							
Tube length (135mm)							
Tube end connector P1 Nylon ball joint							
Packaging Code							
Force in New ton's (200N)							

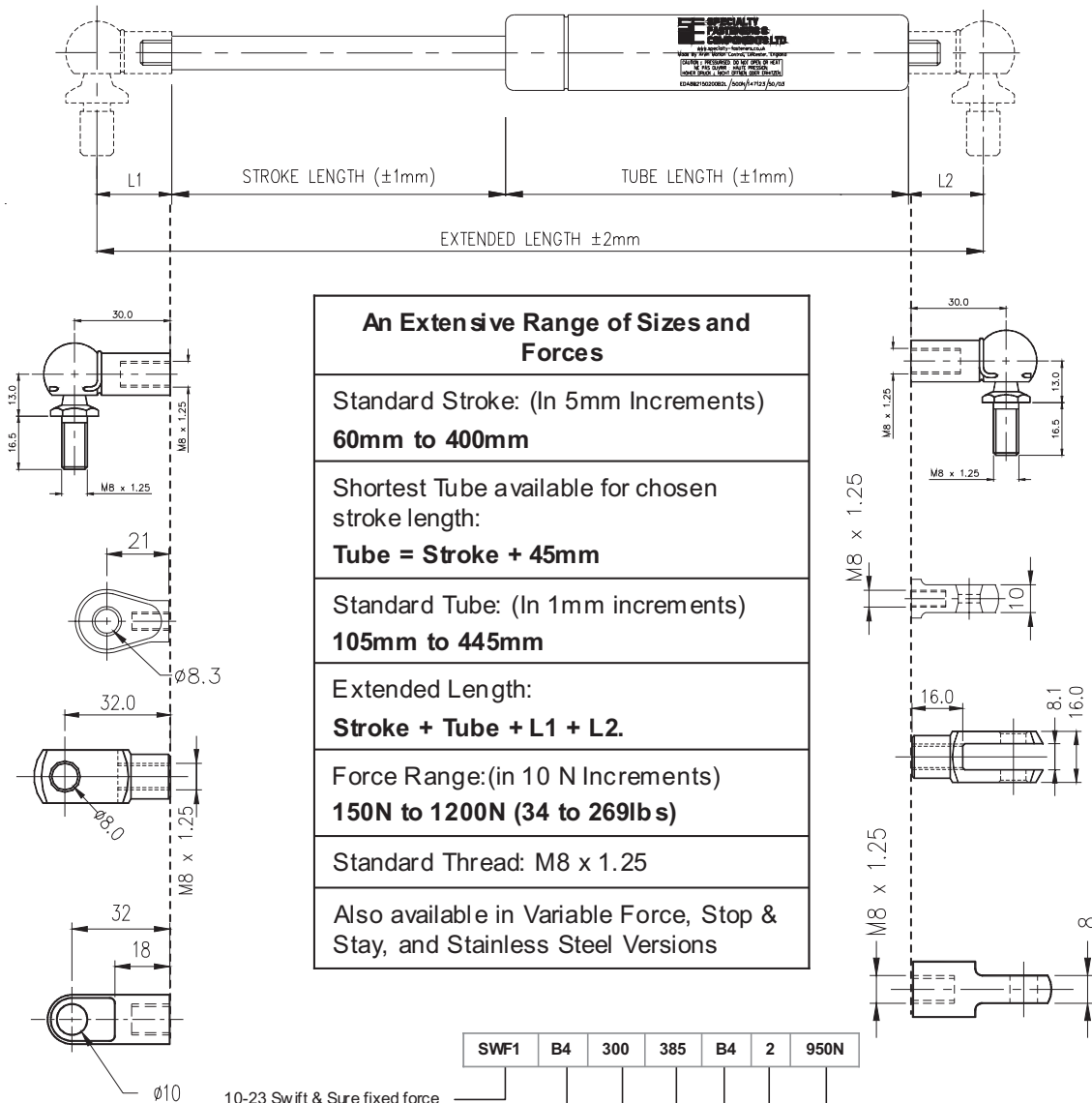
<b>Variable Force - Standard Lift 8-18 Gas Spring</b>	
Approximate Lid Weight	10Kg to 40Kg
Piston Rod	ø 8 mm Nitrided Steel
Cylinder	ø 18 mm Steel Black Powder Coated
End Connectors	Nylon, Steel & Zinc options



<b>An Extensive Range of Sizes and Forces</b>
Standard Stroke: (In 5mm Increments) <b>60mm to 300mm</b>
Shortest Tube available for chosen stroke length: <b>Tube = Stroke + 45mm</b>
Standard Tube: (In 1mm increments) <b>105mm to 345mm</b>
Extended Length: <b>Stroke + Tube + L1 + L2.</b>
Force Range: (in 10 N Increments) <b>100N to 650N (22-146 lbs)</b>
Standard Thread: M6 x 1.0
Also available in Variable Force, Stop & Stay, and Stainless Steel Versions



<b>Fixed Force - Standard Lift 10-23 Gas Spring</b>	
Approximate Lid Weight	40Kg to 150Kg
Piston Rod	∅ 10 mm Nitrided Steel
Cylinder	∅ 23 mm Steel Black Powder Coated
End Connectors	Nylon, Steel & Zinc options



**An Extensive Range of Sizes and Forces**

Standard Stroke: (In 5mm Increments)  
**60mm to 400mm**

Shortest Tube available for chosen stroke length:  
**Tube = Stroke + 45mm**

Standard Tube: (In 1mm increments)  
**105mm to 445mm**


Extended Length:  
**Stroke + Tube + L1 + L2.**

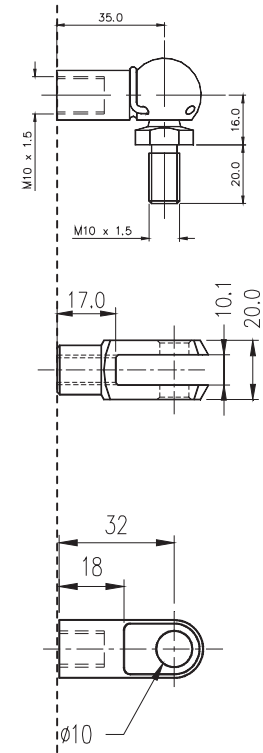
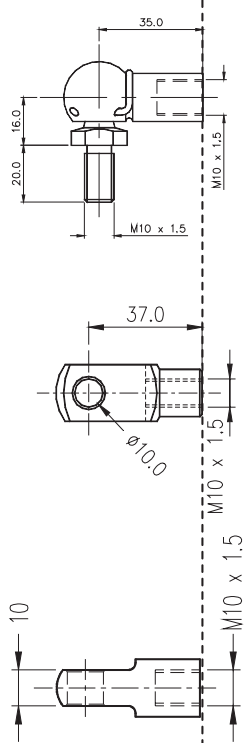
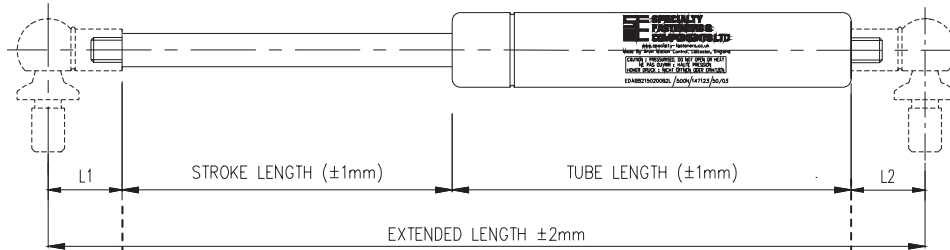
Force Range:(in 10 N Increments)  
**150N to 1200N (34 to 269lbs)**

Standard Thread: M8 x 1.25

Also available in Variable Force, Stop & Stay, and Stainless Steel Versions

	SWF1	B4	300	385	B4	2	950N
10-23 Swift & Sure fixed force							
Rod end connector B4 Steel ball joint							
Stroke length (300mm)							
Tube length (385mm)							
Tube end connector B4 Steel ball joint							
Packaging Code							
Force in Newton's (950N)							

<b>Fixed Force - Standard Lift 14-28 Gas Spring</b>	
Approximate Lid Weight	150Kg to 350Kg
Piston Rod	ø 14 mm Nitrided Steel
Cylinder	ø 28 mm Steel Black Powder Coated
End Connectors	Steel options available



<b>An Extensive Range of Sizes and Forces</b>
Standard Stroke: (In 5mm Increments) <b>60mm to 500mm</b>
Shortest Tube available for chosen stroke length: <b>Tube = Stroke + 55mm</b>
Standard Tube: (In 1mm increments) <b>115mm to 555mm</b>
Extended Length: <b>Stroke + Tube + L1 + L2.</b>
Force Range: (in 10 N Increments) <b>200N to 2500N (45 to 562lbs)</b>
Standard Thread: M10 x 1.5
Also available in Variable Force, and Stainless Steel Versions

	SWF4	B6	450	505	B6	2	2200N
14-28 Swift & Sure fixed force	—	—	—	—	—	—	—
Rod end connector B6 Steel ball joint	—	—	—	—	—	—	—
Stroke length (450mm)	—	—	—	—	—	—	—
Tube length (505mm)	—	—	—	—	—	—	—
Tube end connector B6 Steel ball joint	—	—	—	—	—	—	—
Packaging Code	—	—	—	—	—	—	—
Force in Newton's (2200N)	—	—	—	—	—	—	—