

# Stainless Steel

SFC's most popular range of Gas Springs is also available in 316L Stainless Steel. Manufactured using 316L Stainless Steel, conferring increased corrosion resistance in industrial, marine and coastal environments.

SFC Stainless Steel Gas Springs also have a specially prepared surface finish to give additional hardness and corrosion resistance.

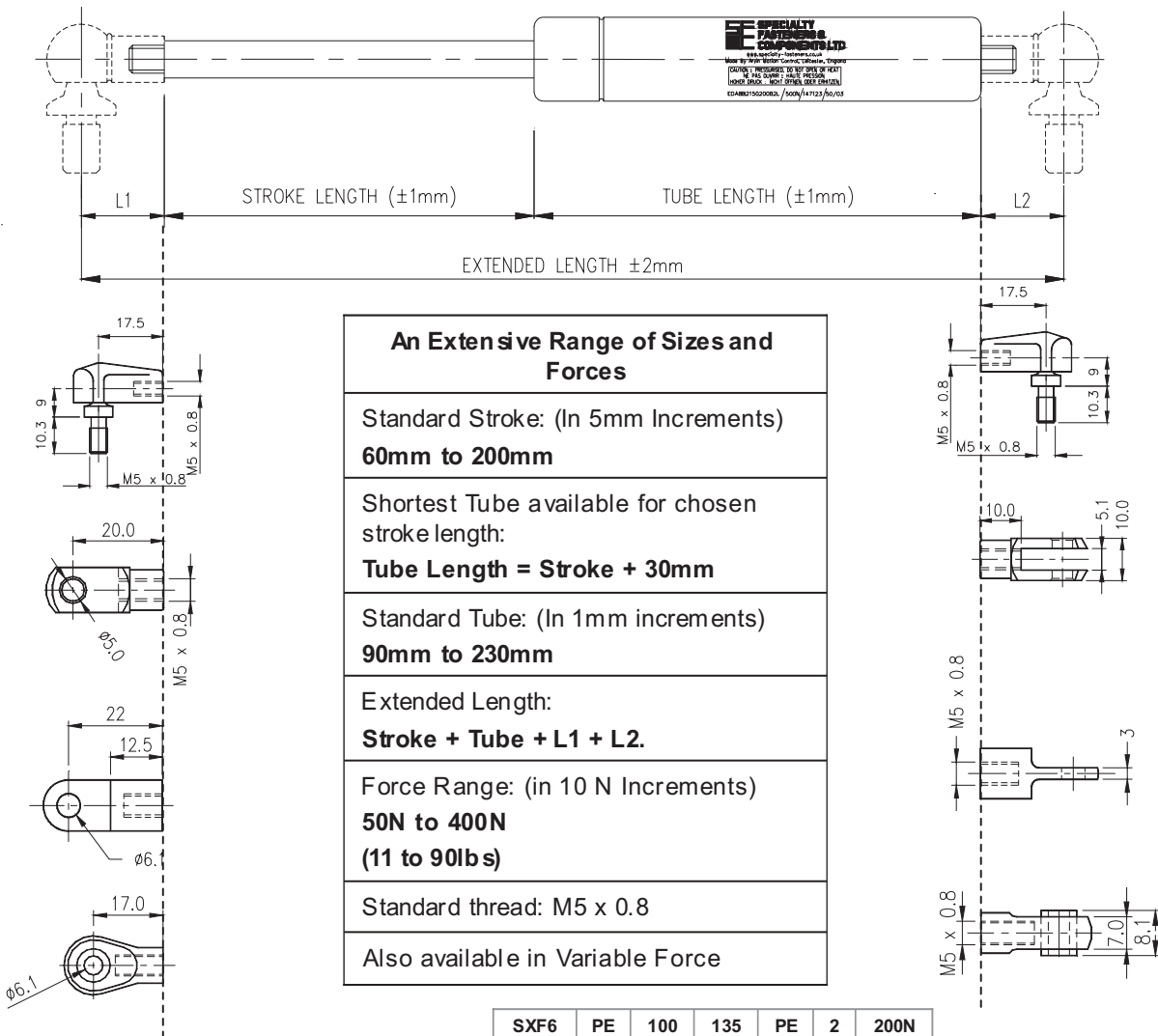
SFC Standard Lift Stainless Gas Springs are ideally suited for use in harsh environment applications requiring high levels of corrosion resistance, such as powerboat engine covers, and doors, and also for application environments requiring high levels of cleanliness such as the food and medical industries.



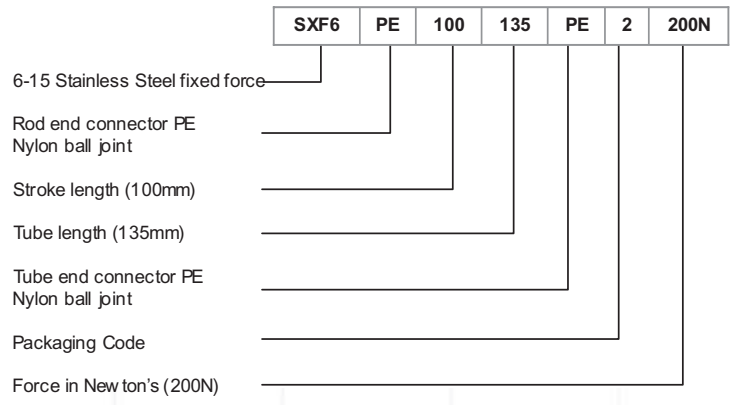
## Benefits

- High corrosion resistance for external applications
- 316L Stainless Steel tube and rod
- Additional hardness & corrosion resistance via special surface finish - Rod Only
- Custom Design, sized to your application
- Custom force setting or adjust-yourself option
- Safe to use and operate
- Stainless Steel connectors available

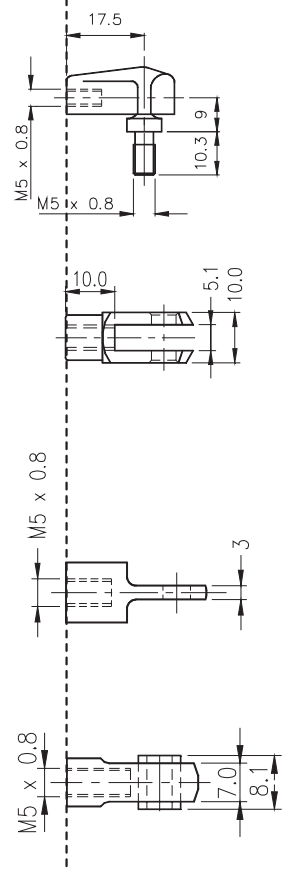
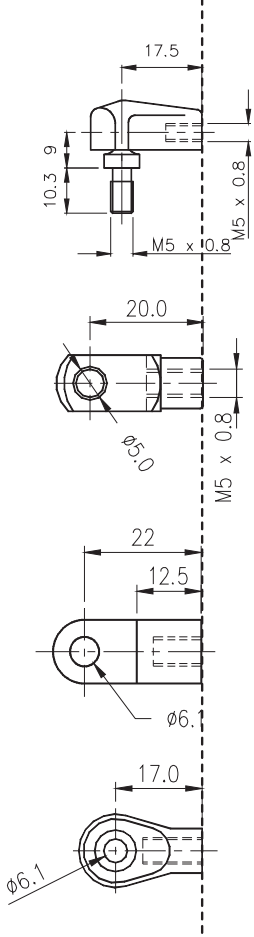
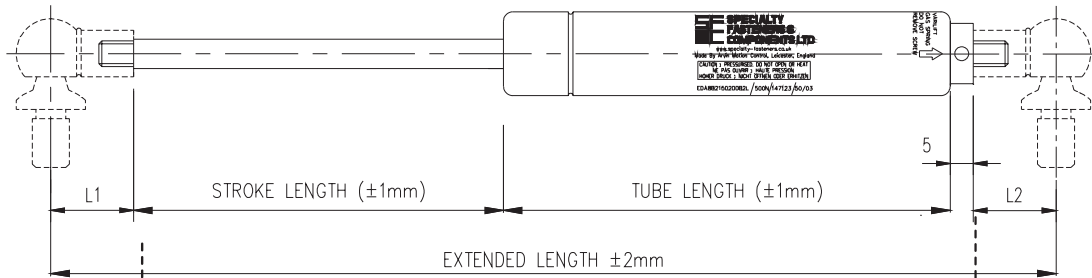
<b>Fixed Force - Standard Lift Stainless Steel 6-15 Gas Spring</b>	
Approximate Lid Weight	<b>Up to 10Kg</b>
Piston Rod	<b>ø 6 mm 316L Stainless Steel</b>
Cylinder	<b>ø 15 mm 316L Stainless Steel</b>
End Connectors	<b>Nylon, &amp; Stainless Steel options</b>



<b>An Extensive Range of Sizes and Forces</b>
Standard Stroke: (In 5mm Increments) <b>60mm to 200mm</b>
Shortest Tube available for chosen stroke length: <b>Tube Length = Stroke + 30mm</b>
Standard Tube: (In 1mm increments) <b>90mm to 230mm</b>
Extended Length: <b>Stroke + Tube + L1 + L2.</b>
Force Range: (in 10 N Increments) <b>50N to 400N (11 to 90lbs)</b>
Standard thread: M5 x 0.8
Also available in Variable Force



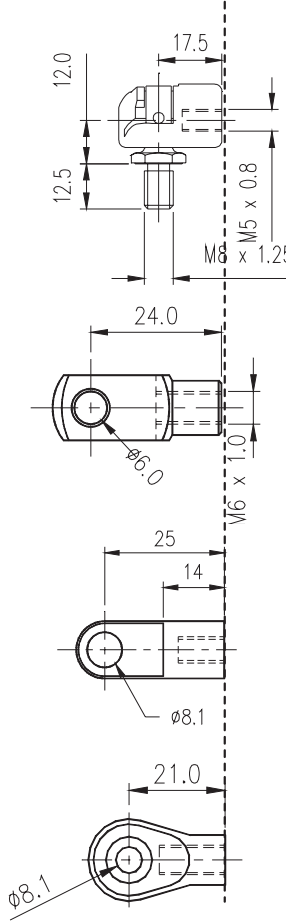
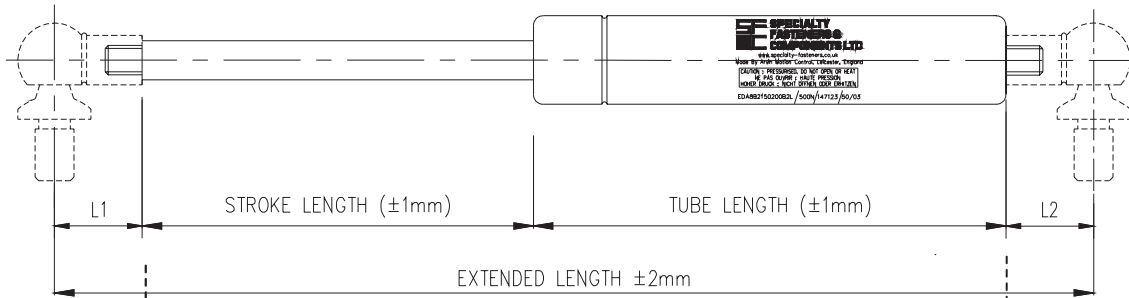
<b>Variable Force - Standard Lift Stainless Steel 6-15 Gas Spring</b>	
Approximate Lid Weight	Up to 10Kg
Piston Rod	ø 6 mm 316L Stainless Steel
Cylinder	ø 15 mm 316L Stainless Steel
End Connectors	Nylon & Stainless Steel options



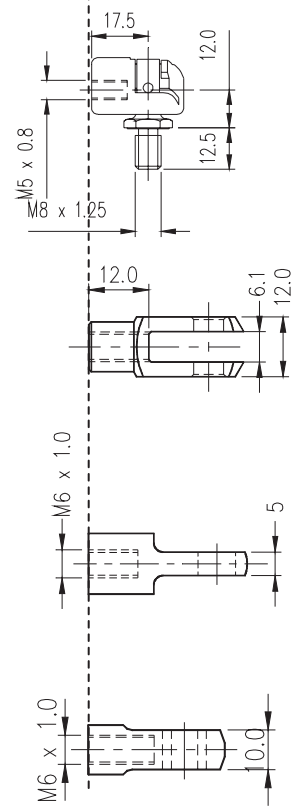
<b>An Extensive Range of Sizes and Forces</b>
Standard Stroke: (In 5mm Increments) <b>60mm to 200mm</b>
Shortest Tube available for chosen stroke length: <b>Tube = Stroke + 30mm</b>
Standard Tube: (In 1mm increments) <b>90mm to 230mm</b>
Extended Length: <b>Stroke + Tube + 5mm(Valve)+L1+L2.</b>
Force Range: Supplied charged to max <b>force 400N</b> . Force can be reduced through valve. (See Vari-Lift Instruction Section)
Standard Thread: M5 x 0.8
Also available in Fixed Force

	SXV6	PE	100	135	PE	2	400N
6-15 Stainless Steel variable force							
Rod end connector PE							
Nylon ball joint							
Stroke length (100mm)							
Tube length (135mm)							
Tube end connector PE							
Nylon ball joint							
Packaging Code							
Force in New ton's (400N)							

<b>Fixed Force – Stainless Steel Standard Lift 8-18 Gas Spring</b>	
Approximate Lid Weight	<b>10Kg to 40Kg</b>
Piston Rod	<b>ø 8 mm 316L Stainless Steel</b>
Cylinder	<b>ø 18 mm 316L Stainless Steel</b>
End Connectors	<b>Nylon &amp; Stainless Steel options</b>

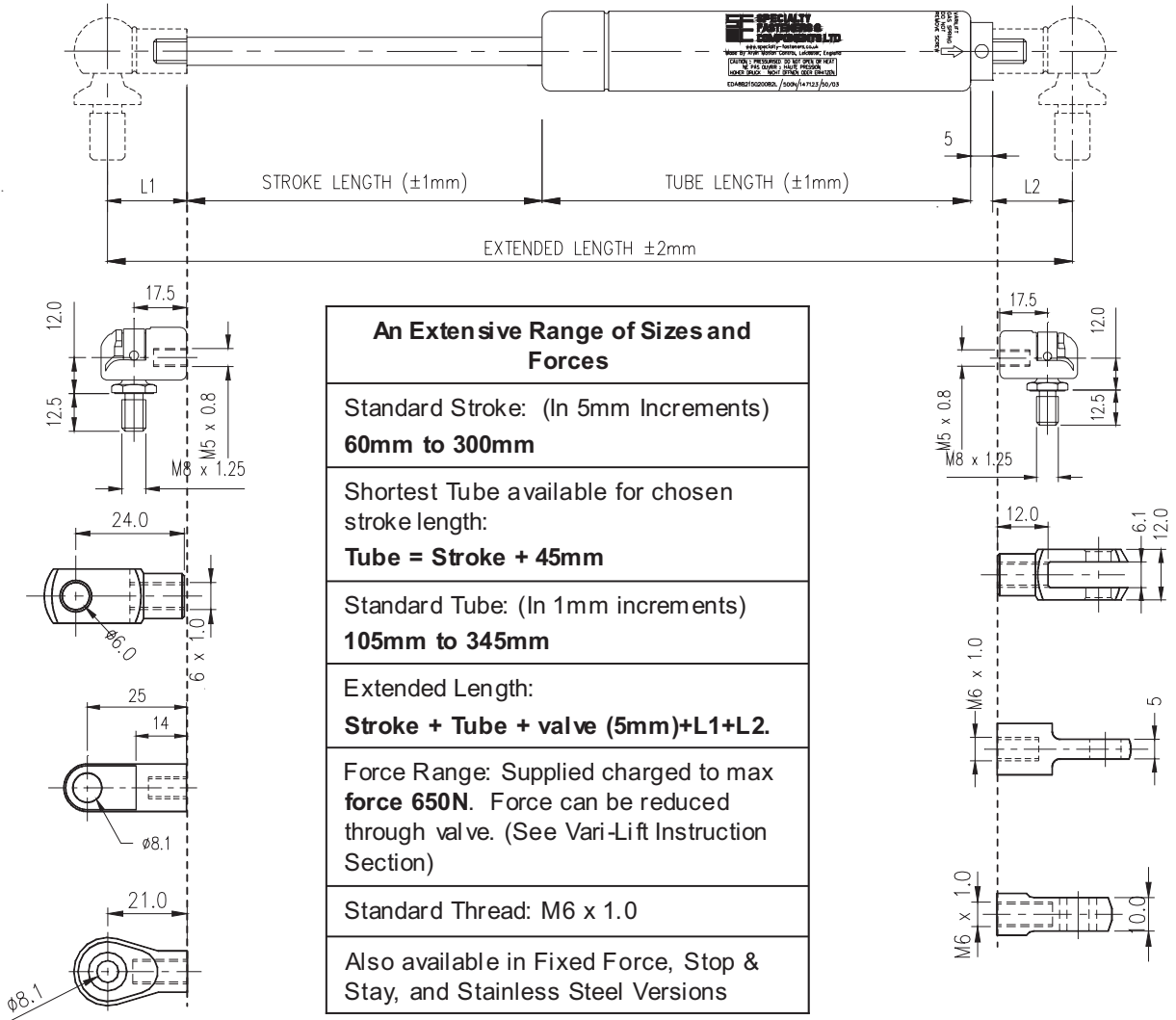


<b>An Extensive Range of Sizes and Forces</b>
Standard Stroke: (In 5mm Increments) <b>60mm to 300mm</b>
Shortest Tube available for chosen stroke length: <b>Tube = Stroke + 45mm</b>
Standard Tube: (In 1mm increments) <b>105mm to 345mm</b>
Extended Length: <b>Stroke + Tube + L1 + L2.</b>
Force Range: (in 10 N Increments) <b>100N to 650N (22-146 lbs)</b>
Standard Thread: <b>M6 x 1.0</b>
Also available in Variable Force Versions



	SXF8	PV	100	135	PV	2	500N
8-18 Stainless Steel fixed force	✓						
Rod end connector PV		✓					
Nylon ball joint			✓				
Stroke length (100mm)			✓				
Tube length (135mm)				✓			
Tube end connector PV					✓		
Nylon ball joint						✓	
Packaging Code							✓
Force in New ton's (500N)							✓

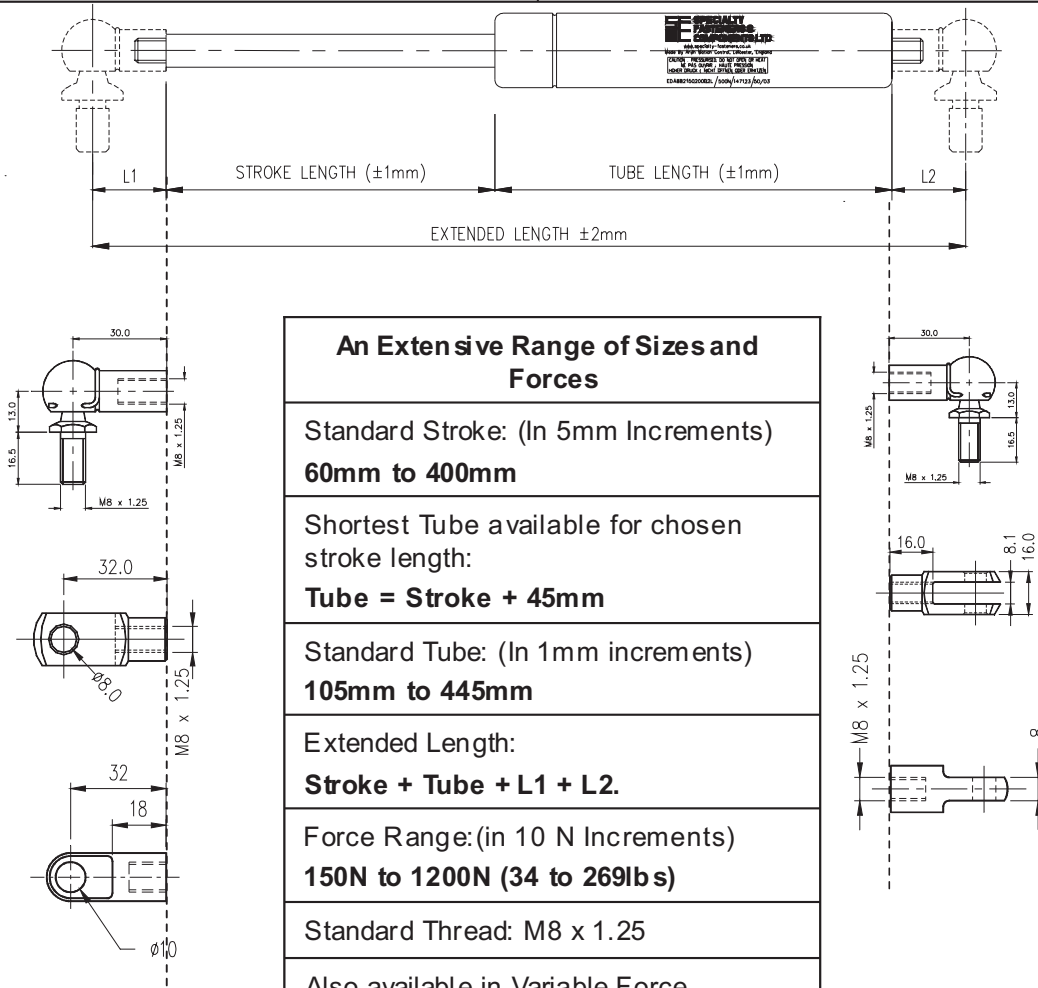
<b>Variable Force – Stainless Steel Standard Lift 8-18 Gas Spring</b>	
Approximate Lid Weight	<b>10Kg to 40Kg</b>
Piston Rod	<b>ø 8 mm 316L Stainless Steel</b>
Cylinder	<b>ø 18 mm 316L Stainless Steel</b>
End Connectors	<b>Nylon &amp; Stainless Steel options</b>



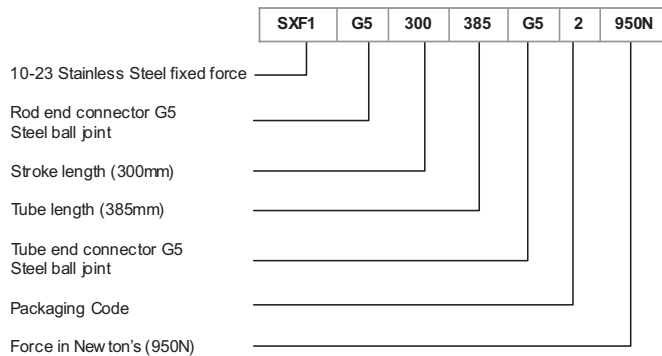
<b>An Extensive Range of Sizes and Forces</b>
Standard Stroke: (In 5mm Increments) <b>60mm to 300mm</b>
Shortest Tube available for chosen stroke length: <b>Tube = Stroke + 45mm</b>
Standard Tube: (In 1mm increments) <b>105mm to 345mm</b>
Extended Length: <b>Stroke + Tube + valve (5mm)+L1+L2.</b>
Force Range: Supplied charged to max <b>force 650N</b> . Force can be reduced through valve. (See Vari-Lift Instruction Section)
Standard Thread: <b>M6 x 1.0</b>
Also available in Fixed Force, Stop & Stay, and Stainless Steel Versions

	<b>SXV8</b>	<b>PV</b>	<b>100</b>	<b>135</b>	<b>PV</b>	<b>2</b>	<b>650N</b>
8-18 Stainless Steel variable force	_____	_____	_____	_____	_____	_____	_____
Rod end connector P5 Nylon ball joint	_____	_____	_____	_____	_____	_____	_____
Stroke length (100mm)	_____	_____	_____	_____	_____	_____	_____
Tube length (135mm)	_____	_____	_____	_____	_____	_____	_____
Tube end connector P5 Nylon ball joint	_____	_____	_____	_____	_____	_____	_____
Packaging Code	_____	_____	_____	_____	_____	_____	_____
Force in Newton's (650N)	_____	_____	_____	_____	_____	_____	_____

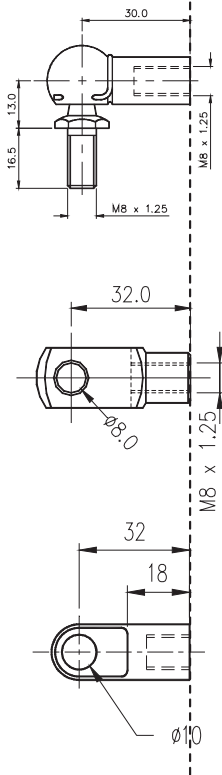
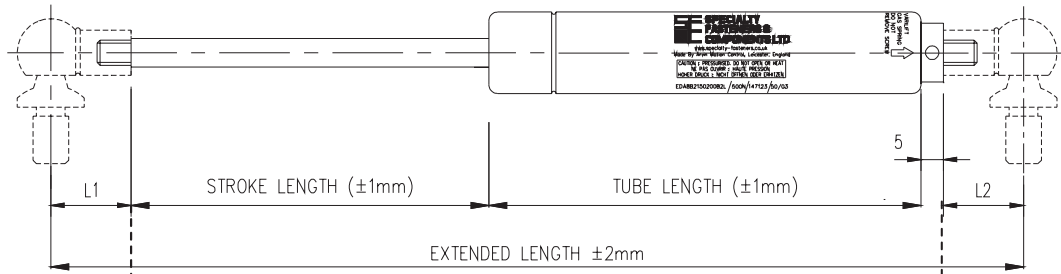
<b>Fixed Force – Stainless Steel Standard Lift 10-23 Gas Spring</b>	
Approximate Lid Weight	<b>40Kg to 150Kg</b>
Piston Rod	<b>∅ 10 mm 316L Stainless Steel</b>
Cylinder	<b>∅ 23 mm 316L Stainless Steel</b>
End Connectors	<b>Stainless Steel options</b>



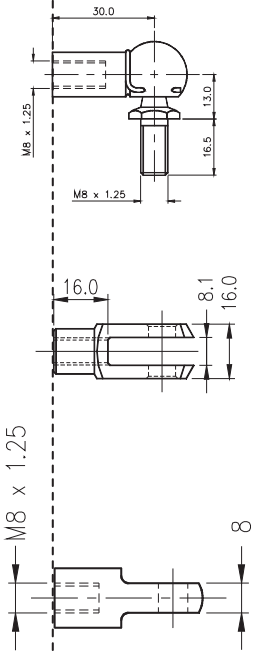
<b>An Extensive Range of Sizes and Forces</b>
Standard Stroke: (In 5mm Increments) <b>60mm to 400mm</b>
Shortest Tube available for chosen stroke length: <b>Tube = Stroke + 45mm</b>
Standard Tube: (In 1mm increments) <b>105mm to 445mm</b>
Extended Length: <b>Stroke + Tube + L1 + L2.</b>
Force Range: (in 10 N Increments) <b>150N to 1200N (34 to 269lb s)</b>
Standard Thread: M8 x 1.25
Also available in Variable Force Versions



<b>Variable Force – Stainless Steel Standard Lift 10-23 Gas Spring</b>	
Approximate Lid Weight	<b>40Kg to 150Kg</b>
Piston Rod	<b>ø 10 mm 316L Stainless Steel</b>
Cylinder	<b>ø 23 mm 316L Stainless Steel</b>
End Connectors	<b>Stainless Steel options</b>



<b>An Extensive Range of Sizes and Forces</b>
Standard Stroke: (In 5mm Increments) <b>60mm to 400mm</b>
Shortest Tube available for chosen stroke length: <b>Tube = Stroke + 45mm</b>
Standard Tube: (In 1mm increments) <b>105mm to 445mm</b>
Extended Length: <b>Stroke + Tube + valve (5mm)+L1+L2.</b>
Force Range: (in 10 N Increments) <b>150N to 1200N (34 to 269lbs)</b>
Standard Thread: M8 x 1.25
Also available in Fixed Force Versions



	SXV1	G5	300	385	G5	2	1200N
10-23 Stainless Steel variable force							
Rod end connector G5 Steel ball joint							
Stroke length (300mm)							
Tube length (385mm)							
Tube end connector G5 Steel ball joint							
Packaging Code							
Force in Newton's (1200N)							