

MADE TO
ORDER



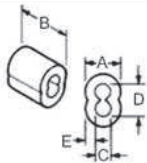
Bulk Terminals

Bulk lanyard components available from stock. Purchase what you need to make your own assemblies. High quality precision parts will do the job right.

Oval sleeves, stop sleeves and lanyard tabs can be assembled with our cable crimp tool. Steel stamped eyes require special assembly equipment.

We will advise correct assembly procedures for your application.

Bulk Terminals - Aluminum Oval Sleeves

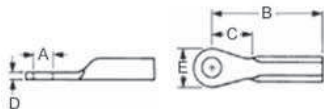


Aluminum oval sleeves are designed to hold beyond the break strength of the cable. Sleeves should be crimped directly on the cable, not on the coating. A sleeve crimped on a coated cable is only as strong as the coating. For maximum hold, a large press is used for assembly. Hand crimp tools serve many applications, but generally do not produce an assembly which exceeds the breaking strength of the cable.

Part No.	Fits Cable Diameter	Material	Dimensions					Approximate Weight/Pounds per 100 pieces
			A	B	C	D	E	
SLA-47	3/64	Aluminum	.149	.375	.055	.116	.045	.05
SLA-62	1/16	Aluminum	.175	.375	.085	.160	.050	.08
SLA-94	3/32	Aluminum	.281	.500	.121	.253	.080	.26
SLA-125	1/8	Aluminum	.343	.625	.156	.313	.093	.66

Unless otherwise noted, all dimensions are for reference only.

Bulk Terminals - Steel Stamped Eyes (Zinc Plated)



Steel stamped eyes require special equipment for assembly. These rugged terminals are used widely to mount cable assemblies to equipment. Not to be confused with electrical terminals. Material: cold rolled steel (carbon or stainless). Stocked in Stainless.

Part No.	Fits Cable Diameter	Material	Dimensions					Approximate Weight/Pounds per 100 pieces
			A	B	C	D	E	
EYE-47-1	3/64	CR Steel	.190	.718	.250	.060	.330	.28
EYE-62-1	1/16	CR Steel	.190	.945	.330	.060	.420	.57
EYE-62-2	1/16	CR Steel	.260	.987	.317	.060	.460	.55
EYE-94-2	3/32	CR Steel	.250	1.420	.390	.090	.500	1.92
EYE-94-3	3/32	CR Steel	.375	1.310	.450	.090	.750	2.04
EYE-47S-1	3/64	300 Series S.S.	.190	.718	.250	.060	.330	.28
EYE-62S-1	1/16	300 Series S.S.	.190	.945	.330	.060	.420	.57
EYE-62S-2	1/16	300 Series S.S.	.260	.987	.317	.060	.460	.55
EYE-94S-2	3/32	300 Series S.S.	.250	1.420	.390	.090	.500	1.92
EYE-94S-3	3/32	300 Series S.S.	.375	1.310	.450	.090	.750	2.04

Unless otherwise noted, all dimensions are for reference only.

Bulk Terminals - Lanyard Mounting Tab



Lanyard tabs are made of 300 series stainless. This versatile mounting tab is usually used in conjunction with a loop end.

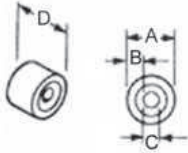
Part No.	Fits Cable Diameter	Material	Dimensions					Approximate Weight/Pounds per 100 pieces
			A	B	C	D	E	
TAB-62-S	3/64 - 1/8	300 Series S.S.	.190	1.250	.377	.062	15°	.63

Unless otherwise noted, all dimensions are for reference only.

Bulk Terminals Cont'd

Bulk Terminals - Stop Sleeves

Continued from previous page

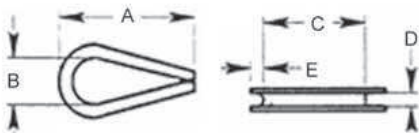


Stop sleeves are used in "hanger"-type applications where assemblies can be removed easily. A low cost terminal stop sleeve can be installed using a hand crimp tool.

Part No.	Fits Cable Diameter	Material	Dimensions				Approximate Weight/Pounds per 100 pieces
			A	B	C	D	
STP-47C	3/64	Copper	.172	.055	.063	.218	.15
STP-62A	1/16	Aluminum	.247	.088	.075	.225	.06
STP-94A	3/32	Aluminum	.347	.120	.110	.350	.23
STP-125A	1/8	Aluminum	.343	.101	.140	.350	.21

Unless otherwise noted, all dimensions are for reference only.

Bulk Terminals - Thimbles



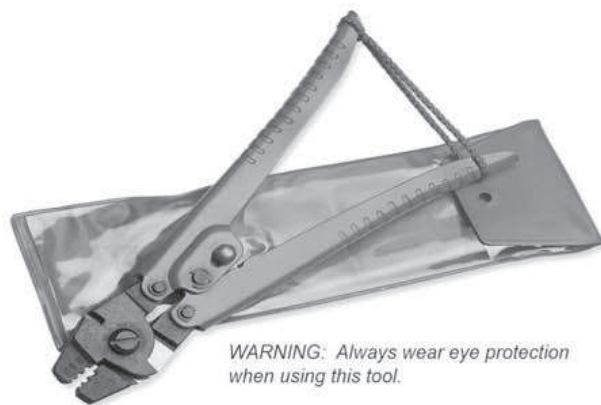
Thimbles are used in conjunction with a lanyard loop to increase cable life by increasing wear resistance as well as distributing the load on the cable over a larger area.

Part No.	Fits Cable Diameter	Material	Dimensions					Approximate Weight/Pounds per 100 pieces
			A	B	C	D	E	
TIM-62	1/16 - 5/64	CR Steel	.969	.35	.703	.094	.078	.15
TIM-62S	1/16 - 5/64	300 Series S.S.	.969	.35	.703	.094	.078	.15
TIM-94	3/32 - 1/8	CR Steel	1.000	.35	.703	.141	.078	.43
TIM-94S	3/32 - 1/8	300 Series S.S.	1.000	.35	.703	.141	.078	.43

Unless otherwise noted, all dimensions are for reference only.

Cable Cutter and Crimp Tool

Make your own cable assemblies in house using this versatile and durable tool. The dual purpose Cutter/Crimping tool tightly crimps Aluminum Oval and Stop Sleeves, and features a built-in cable cutter. Cut cleanly without fraying the end of the cable.



WARNING: Always wear eye protection when using this tool.

Part No.	Description	Crimping Range	Length	Weight Each (lbs.)
CCT-WCI	Cable Cutter/ Crimp tool <i>Cuts cleanly; does not fray cable.</i>	1/32", 3/64", 1/16"	9"	.75